



Sea Spirit



Sea Spirit is an impressive and well equipped expedition vessel, complete with rubber inflatable zodiac boats – ideal for shore transfers and exploration. She is equipped with stabilizers for smooth sailing, approved for navigating around polar waters and can carry a total of 114 passengers.

There are a variety of different cabin types for passengers to choose from, 15 of which have their own private balconies, which are perfect for surveying the breathtaking polar landscapes. Cabins are very spacious, with the smallest being a generous 215 square feet and the largest being 550 square feet. Each cabin has an exterior view, en-suite bathroom, satellite phone and a flat screen TV / DVD system.

Public areas include a restaurant, bar, outdoor bistro, library, gym, hot tub, infirmary, elevator and polar boutique. There is also a multi-purpose presentation room with state of the art equipment, perfect for evening discussions and group meetings. There is an open bridge policy so that you can talk to the captain and officers and watch the landscapes from this special angle.



Sun Deck



Dining Room



SPECIALISTS IN WILDERNESS & WILDLIFE TRAVEL WHERE LAND MEETS WATER

Tel: + 44 (0) 1428 620012

www.aqua-firma.com

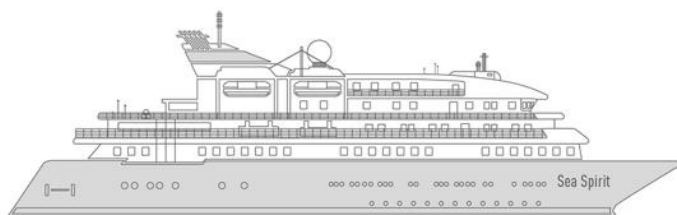
Copyright Aqua-Firma Worldwide Ltd.



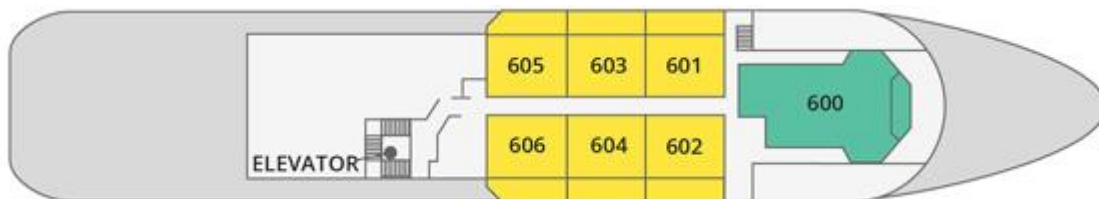
AQUA-FIRMA

- Owner's
- Classic
- Premium
- Triple
- Deluxe
- Main Deck
- Superior

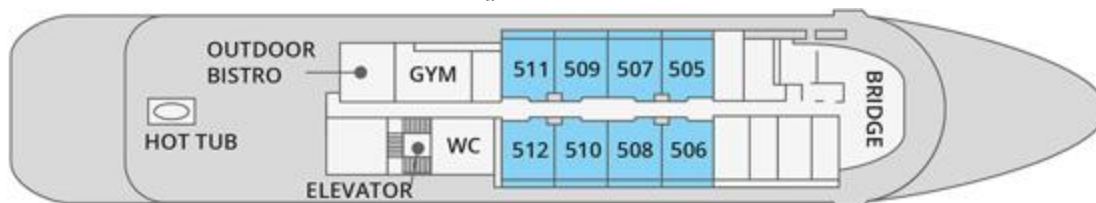
SUN DECK —
SPORTS DECK —
CLUB DECK —
OCEAN DECK —
MAIN DECK —



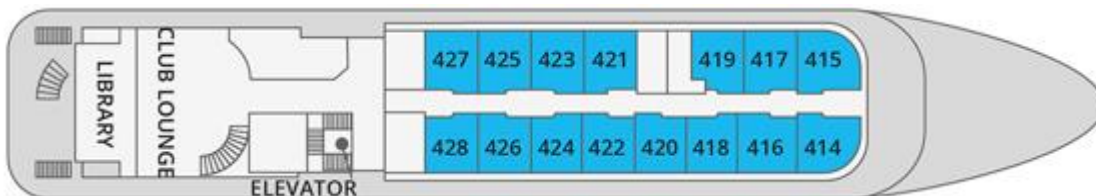
Sun Deck



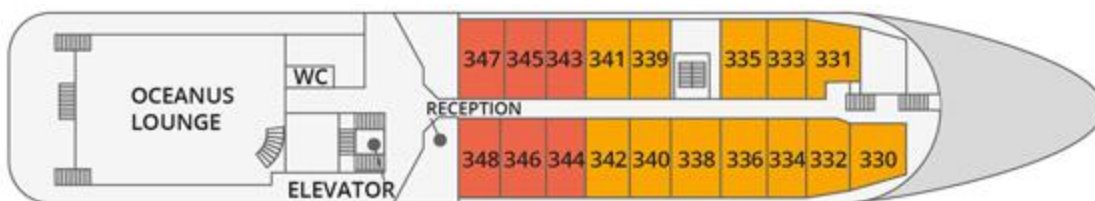
Sports Deck



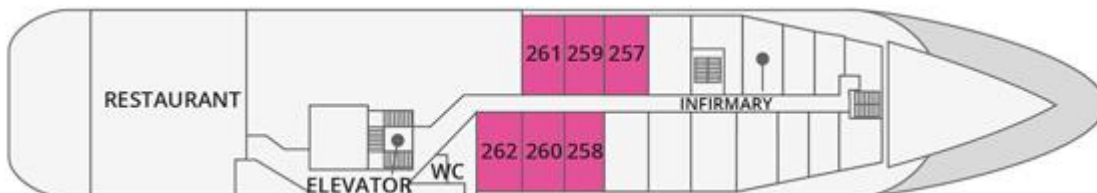
Club Deck



Ocean Deck



Main Deck



AQUA-FIRMA

SPECIALISTS IN WILDERNESS & WILDLIFE TRAVEL WHERE LAND MEETS WATER

Tel: + 44 (0) 1428 620012

www.aqua-firma.com

Copyright Aqua-Firma Worldwide Ltd.

Triple Classic Cabin (343 – 348)



- Averages 226 sq. feet
- 2 twin beds or double and a sofa bed
- Located on Oceanus Deck
- Picture window with exterior view
- 2 wardrobes
- Private facilities
- In-room safe
- Refrigerator
- Satellite telephone access
- TV/DVD
- Individual temperature control
- Hair dryer
- Twin beds can be configured to king

Main Deck Cabin (257 – 262)



- Averages 248 sq. feet
- 2 twin beds or a king bed
- Located on Main Deck
- Minimum of two portholes for exterior views
- Wardrobe
- Private facilities
- In-room safe
- Refrigerator
- Satellite telephone access
- TV/DVD
- Individual temperature control
- Hair dryer



Classic Cabin (330 – 342)



- Averages 226 sq. feet
- 2 twin beds or a king bed
- Located on Oceanus Deck
- Picture window with exterior view
- 2 wardrobes
- Private facilities
- In-room safe
- Refrigerator
- Satellite telephone access
- TV/DVD
- Individual temperature control
- Hair dryer

Superior Cabin (414 – 427)



- Averages 215 sq. feet
- 2 twin beds or a king bed
- Located on Club Deck
- Picture window overlooks outside walkway
- Wardrobe
- Private facilities
- In-room safe
- Refrigerator
- Satellite telephone access
- TV/DVD
- Individual temperature control
- Hair dryer



SPECIALISTS IN WILDERNESS & WILDLIFE TRAVEL WHERE LAND MEETS WATER

Tel: + 44 (0) 1428 620012

www.aqua-firma.com

Copyright Aqua-Firma Worldwide Ltd.



Deluxe Cabin (506 – 511)



- Averages 258 sq. feet
- 2 twin beds or a king bed
- Located on Sports Deck
- Sliding glass door to a private balcony
- Walk-in closet or wardrobe
- Private facilities
- In-room safe
- Refrigerator
- Satellite telephone access
- TV/DVD
- Individual temperature control
- Hair dryer

Premium Suite (602 – 605)



- Averages 323 sq. feet
- 2 twin beds or a king bed
- Located on Sun Deck
- Sliding door to a private balcony
- Wardrobe
- Private facilities
- In-room safe
- Refrigerator
- Satellite telephone access
- TV/DVD
- Individual temperature control
- Hair dryer



SPECIALISTS IN WILDERNESS & WILDLIFE TRAVEL WHERE LAND MEETS WATER

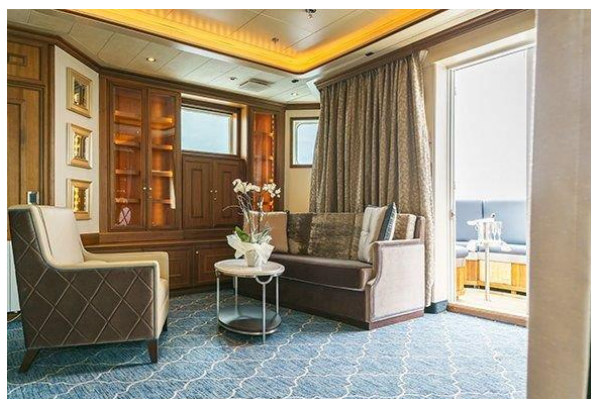
Tel: + 44 (0) 1428 620012

www.aqua-firma.com

Copyright Aqua-Firma Worldwide Ltd.



Owner's Suite



- Designed for entertaining
- Separate living room with game and meeting area
- BOSE stereo system
- HD Plasma TV with DVD player
- Sliding glass doors lead to a private deck

- Jetted bath tub
- 563 sq. feet
- King size bed in a separate sleeping area
- Sofa bed in the living area



SPECIALISTS IN WILDERNESS & WILDLIFE TRAVEL WHERE LAND MEETS WATER

Tel: + 44 (0) 1428 620012

www.aqua-firma.com

Copyright Aqua-Firma Worldwide Ltd.

AQUA-FIRMA



Presentation Lounge



Library



Reception



Club Lounge

Specifications

Capacity:	114 passengers
Length:	90.6 metres
Breadth:	15.3 metres
Draft	4.16 metres
Engines:	Diesel – 4720 hp
Ice Class:	ID, ice strengthened hull
Speed:	15 knots cruising speed in open water
Safety Equipment:	4 partially covered lifeboats
Staff & Crew:	72
Registration:	Bahamas

Committed to Nature



**RAINFOREST
TRUST**




AQUA-FIRMA

SPECIALISTS IN WILDERNESS & WILDLIFE TRAVEL WHERE LAND MEETS WATER

Tel: + 44 (0) 1428 620012

www.aqua-firma.com

Copyright Aqua-Firma Worldwide Ltd.