

AQUA-FIRMA

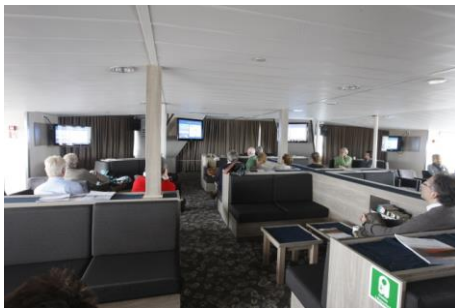
M/V Plancius



M/V *Plancius* was built in 1976 as an oceanographic research vessel for the Royal Dutch Navy, with whom she sailed until June 2004. Recently rebuilt and internally refurbished to a high standard, this vessel carries a maximum of 116 passengers and complies with the latest SOLAS-regulations (Safety Of Life At Sea). M/V *Plancius* is classed by Lloyd's Register in London and flies the Dutch flag. She is comfortable and nicely decorated, but is not a luxury vessel. Voyages aboard her in the Arctic and Antarctic regions are primarily defined by an exploratory educational travel programme, spending as much time ashore as possible. *Plancius* fully meets the demands to achieve this.

Ships Specifications

M/V *Plancius* is comfortable and being ice-strengthened is well suited to the task of polar expedition cruising. All voyages in the Arctic and Antarctic regions are primarily defined by an exploratory educational travel programme, spending as much time ashore as possible. She is equipped with 10 Mark V zodiacs, including 40 HP 4-stroke outboard engines and 2 gangways on starboard side, guaranteeing a swift zodiac operation. She has a diesel-electric propulsion system which reduces the noise and vibration of the engines considerably. The 3 diesel engines generate 1.230 horse-power each, giving the vessel a speed of 10 - 12 knots.



AQUA-FIRMA

SPECIALISTS IN WILDERNESS & WILDLIFE TRAVEL WHERE LAND MEETS WATER

Tel: + 44 (0) 1428 620012

www.aqua-firma.com

Copyright Aqua-Firma Worldwide Ltd.

Staff

M/V *Plancius* is manned by 17 nautical crew, 19 hotel staff (6 chefs, 1 hotel manager, 1 steward-barman and 11 stewards / cabin cleaners), 8 expedition staff (1 expedition leader and 7 guides-lecturers) and 1 doctor.

Cabins and Facilities

M/V *Plancius* accommodates 116 passengers in 53 passenger cabins with private toilet and shower in 4 quadruple porthole cabins, 2 triple porthole cabins, 9 twin porthole cabins, 26 twin cabins with window and 2 twin deluxe cabins, all (ca. 12.5 square meters) and 10 twin superior cabins (ca. 21 square meters). All cabins offer lower berths (one queen-size bed in the superior cabins and two single beds in the twin cabins), except for the 4 quadruple cabins (for 4 persons in 2x upper and lower beds), and 2 triple cabins (1 bunk bed plus 1 lower bed).

The vessel offers a restaurant/lecture room on deck 3 and a spacious observation lounge (with bar) on deck 5 with large windows, offering full panoramic views. M/V *Plancius* has large open deck spaces (with full walk-around possibilities on deck 4), giving excellent opportunities to enjoy the scenery and wildlife.



Quad Porthole Cabin



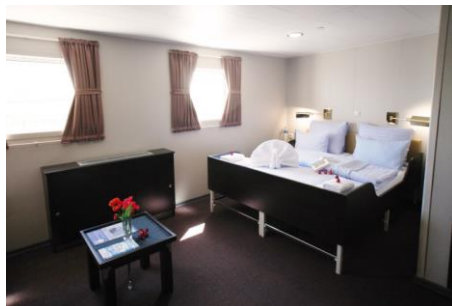
Twin Porthole Cabin



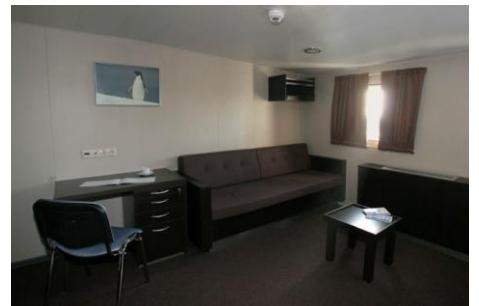
Twin Window Cabin



Twin Deluxe Cabin



Double Superior Cabin

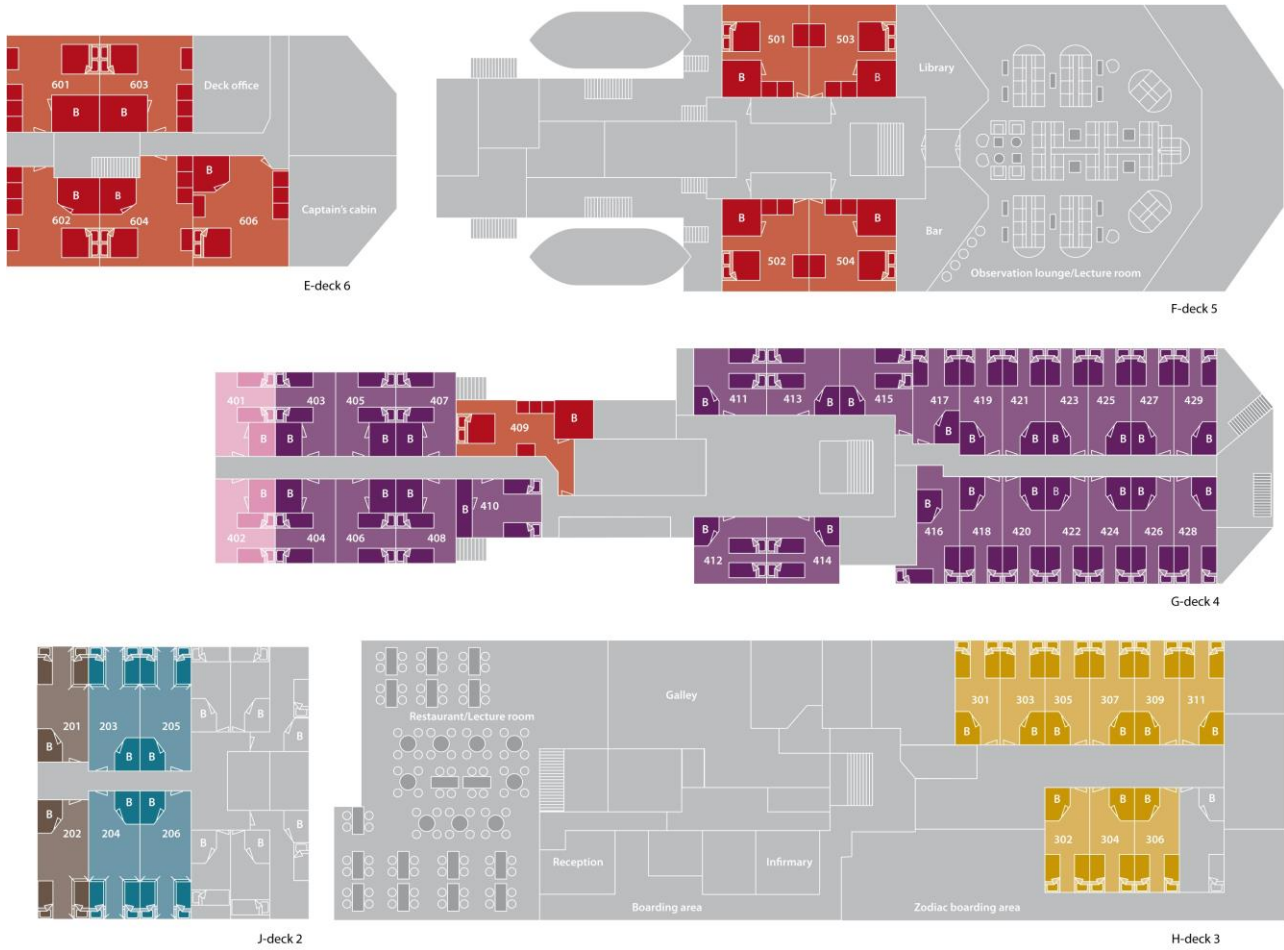


Double Superior Cabin



AQUA-FIRMA

Deck Plan



m/v Plancius deckplan

superior	lower berth	
twin deluxe	upper and lower berth	
twin window	double bed	Bathroom
twin porthole		
triple porthole		
quadruple porthole		



Length: 89 metres (293 feet)
Breadth: 14.5 metres (47 feet)
Draft: 5 metres (16 feet)
Ice Class: 1D
Displacement: 3,175 tonnes
Engines: 3x Diesel-Electric
Speed: 10 – 12 knots
Passengers: 116




AQUA-FIRMA

SPECIALISTS IN WILDERNESS & WILDLIFE TRAVEL WHERE LAND MEETS WATER

Tel: + 44 (0) 1428 620012

www.aqua-firma.com

Copyright Aqua-Firma Worldwide Ltd.