



Greg Mortimer



The *Greg Mortimer* is a purpose-built expedition vessel. At 104 metres in length, she has been built to world-class polar standards and is capable of negotiating the strongest winds and waves.

With a capacity of just 120 passengers within the polar regions, she provides a high standard of accommodation onboard, yet maintains a focus on being able to offer multiple landings, flexible itineraries and a relaxed atmosphere.

The ship offers the patented X-BOW™, created by Norwegian ship designer ULSTEIN, which is an inverted bow concept that's been built on over 100 vessels in the shipping industry, however, this is the first cruising vessel to utilise this technology. The state-of-the-art virtual anchoring technology also means that the ship can float anchorless while launching zodiacs, kayaks etc, without disturbing delicate sea floor areas.

For exceptional views of the spectacular polar landscapes, the ship features unique viewing platforms. The two platforms fold out hydraulically for unobstructed views of potential wildlife and seabirds. There are also specially designed launching platforms, enabling passengers to board the 15 zodiacs easily and quickly. For passengers partaking in any of the various activities offered onboard (kayaking, diving, climbing and ski touring), there is a spacious prep and loading platform. There is also an indoor 180-degree lounge, outdoor 360-degree open deck and 270-degree open sundeck.

Depending on the weather and itinerary, it is possible to take two to three landings a day. On days at sea and when you have a little downtime between onshore excursions there will be informative lectures offered on subjects such as history, culture, biology or climate change. There is also a well-stocked library with books and maps and a wellness centre, including gym equipment, sauna and spa as well as access to bookable treatments.

Meals are served in the large dining room/restaurant. On the last day of the voyage, there will be a special farewell four course dinner and cocktails, the perfect opportunity to reflect on your polar experience with your fellow passengers and expedition staff.



SPECIALISTS IN WILDERNESS & WILDLIFE TRAVEL WHERE LAND MEETS WATER

Tel: + 44 (0) 1428 620012

www.aqua-firma.com

Copyright Aqua-Firma Worldwide Ltd.



Onboard Accommodation

After a long day exploring the wonders of your destination, you need somewhere where you can simply relax and take a break from real life.

The Greg Mortimer is the perfect place to take five and recuperate after exploring – with creature comforts and wellbeing considered as part of the overall design. All staterooms have private bathrooms, personal storage options, twin and double-bed configuration options, ample storage, international power outlets and a daily cabin service, as well as all the basic amenities that you'll need onboard.

Of course, the prospect of unexpected wildlife encounters is always on the table so your accommodation needs to have a view as well! Across four of the five stateroom categories you'll find large floor to ceiling windows that offer prime observation opportunities around the clock. Additionally, there are private balconies in roughly 80% of the staterooms, allowing you to watch the world float past and take in the salty air of the open ocean.

Another great feature of the accommodation on the Greg Mortimer are the interconnecting staterooms. If you're part of a family or group who want some privacy, but still want to be close to each other, these staterooms are the perfect option.

Regardless of your chosen stateroom, you can enjoy fully-serviced accommodation on the Greg Mortimer!

Captain's Suite

Deck: 4 | Quantity: 1 | Room Size: 35.9 m2 | Balcony Size: 10.4 m2

The largest of all rooms, the Captain's Suite will take you to the polar regions in ultimate style and comfort. Complete with large lounge area, balcony, walk-in wardrobe and en-suite, you'll need to get in early to secure this suite.



Cabin Features

- Twin or double bed
- Private en-suite
- Full size window
- Desk area
- Wardrobe space
- Private balcony
- Room controlled thermostat
- Safe for storing valuables
- Separate lounge area
- 42" flat-screen TV



SPECIALISTS IN WILDERNESS & WILDLIFE TRAVEL WHERE LAND MEETS WATER

Tel: + 44 (0) 1428 620012

www.aqua-firma.com

Copyright Aqua-Firma Worldwide Ltd.



Junior Suite

Deck: 7 | Quantity: 4 | Room Size: 30.1 m² | Balcony Size: 14.3 m²

The Junior Suites take in some impressive scenery from their vantage points on Deck 7. When you aren't enjoying a landing, you can relax in the suites' separate lounge area, or just watch the world float by from the private balcony.



Cabin Features

- Twin or double bed
- Private en-suite
- Full size window
- Desk area
- Wardrobe space
- Private balcony
- Room controlled thermostat
- Safe for storing valuables
- Separate lounge area
- 42" flat-screen TV

Balcony Suite

Deck: 4 | Quantity: 2 | Room Size: 25.4 - 26.1 m² | Balcony Size: 9.1 - 10.8 m²

With a bit more room to stretch the legs, the Balcony Suites are perfect for polar adventurers who travel with plenty of gear. They feature private balconies, en-suite bathrooms and a comfortable desk area.



Cabin Features

- Twin or double bed
- Private en-suite
- Full size window
- Desk area
- Wardrobe space
- Private balcony
- Room controlled thermostat
- Safe for storing valuables
- 42" flat-screen TV



SPECIALISTS IN WILDERNESS & WILDLIFE TRAVEL WHERE LAND MEETS WATER

Tel: + 44 (0) 1428 620012

www.aqua-firma.com

Copyright Aqua-Firma Worldwide Ltd.

Balcony Stateroom

Decks: 4,6,7 | **Quantity:** 58 | **Room Size:** 16.5 - 20.7 m² | **Balcony Size:** 6.6 - 7.2 m²

With 58 rooms available, the *Greg Mortimer's* Balcony Staterooms are the most abundant cabin category on board. All include en-suite bathrooms, floor to ceiling windows and balconies and a select number are also connecting rooms, perfect for families or groups.



Cabin Features

- Twin or double bed
- Private en-suite
- Floor to ceiling window
- Desk area
- Wardrobe space
- Private balcony
- Room controlled thermostat
- Safe for storing valuables
- 42" flat-screen TV

Stateroom

Deck: 3 | **Quantity:** 15 | **Size:** 23.2 m²

Greg Mortimer features 15 porthole rooms, all with private en-suites. Located on Deck 3, they're close to the mudroom and loading platforms, perfect for adventurers who are looking for a comfortable base that's close to the action.



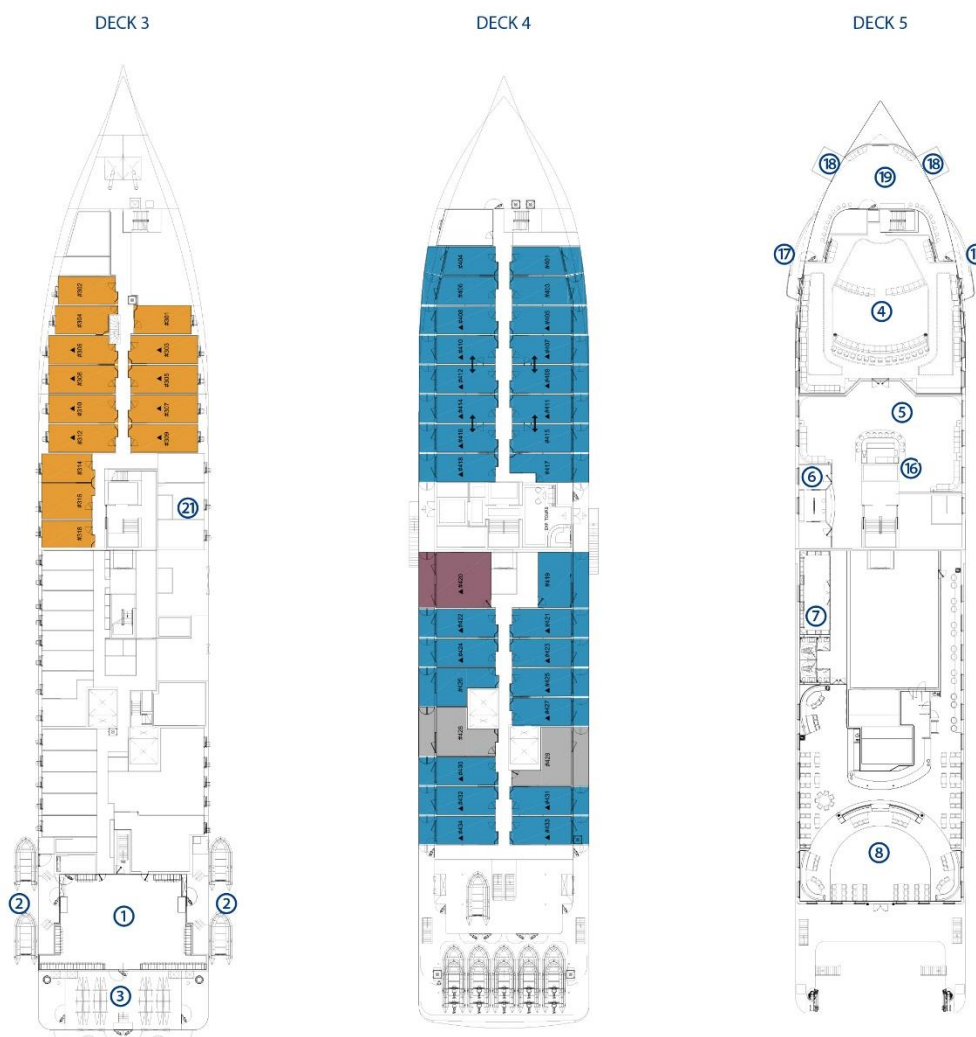
Cabin Features

- Twin or double bed
- Private en-suite
- Floor to ceiling window
- Desk area
- Wardrobe space
- Sofa bed (can sleep 3rd passenger in select cabins)
- Room controlled thermostat
- Safe for storing valuables
- 42" flat-screen TV



AQUA-FIRMA

Deck Plans



Cabin Category

- Aurora Stateroom
- Balcony Stateroom
- Balcony Suite
- Junior Suite
- Captain's Suite

- ▲ Third guest capacity – sofa bed
- ↔ Connecting suites

Deck Plan

- ① Change room/mudroom
- ② Zodiac loading platforms
- ③ Activity launching platform
- ④ Lounge/lecture theatre
- ⑤ Assembly station
- ⑥ Reception
- ⑦ Ship shop
- ⑧ Dining room
- ⑨ Photography and art room
- ⑩ Library
- ⑪ Gym
- ⑫ Sauna/wellness centre
- ⑬ Sun deck
- ⑭ Observation lounge
- ⑮ Top deck
- ⑯ Bars
- ⑰ Viewing platforms
- ⑱ Hydraulic platforms
- ⑲ Observation deck
- ⑳ Jacuzzis/plunge pools
- ㉑ Medical centre



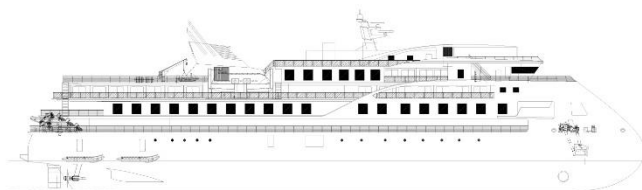
AQUA-FIRMA

SPECIALISTS IN WILDERNESS & WILDLIFE TRAVEL WHERE LAND MEETS WATER

Tel: + 44 (0) 1428 620012

www.aqua-firma.com

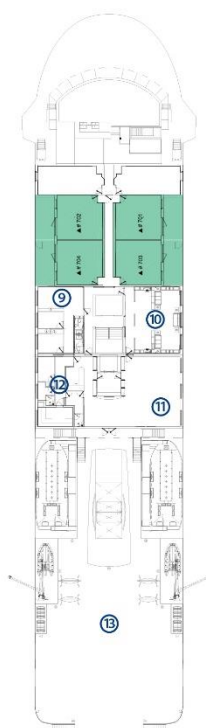
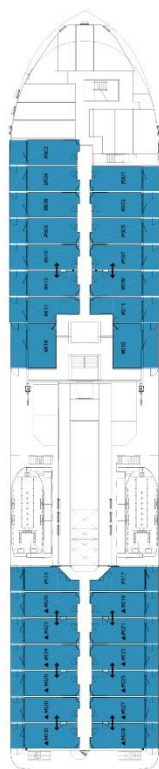
Copyright Aqua-Firma Worldwide Ltd.



DECK 6

DECK 7

DECK 8



Cabin Category

- Aurora Stateroom
- Balcony Stateroom
- Balcony Suite
- Junior Suite
- Captain's Suite

- ▲ Third guest capacity – sofa bed
- ↔ Connecting suites

Deck Plan

- | | | |
|-------------------------------|----------------------------|-------------------------|
| ① Change rooms/mudroom | ⑨ Photography and art room | ⑰ Viewing platforms |
| ② Zodiac loading platforms | ⑩ Library | ⑱ Hydraulic platforms |
| ③ Activity launching platform | ⑪ Gym | ⑲ Observation deck |
| ④ Lounge/lecture theatre | ⑫ Sauna/wellness centre | ⑳ Jacuzzis/plunge pools |
| ⑤ Assembly station | ⑬ Sun deck | ㉑ Medical centre |
| ⑥ Reception | ⑭ Observation lounge | |
| ⑦ Ship shop | ⑮ Top deck | |
| ⑧ Dining room | ⑯ Bars | |

AQUA-FIRMA



X-Bow & Hydraulic Viewing Platforms



Custom-Built Activity Platforms



Mudroom



Dining Room



Bar



180-degree Observation Lounge



SPECIALISTS IN WILDERNESS & WILDLIFE TRAVEL WHERE LAND MEETS WATER

Tel: + 44 (0) 1428 620012

www.aqua-firma.com

Copyright Aqua-Firma Worldwide Ltd.